

How To... Configure Training and Verification System in CUP

SAP GRC Regional Implementation Group

Applicable Releases:

SAP GRC Access Control 5.3

Topic Area:

GRC

Capability:

Compliant User Provisioning Capability of GRC AC 5.3 can now be configured for Training and verification systems to verify if a particular role can be assigned to a user or not

Version 1.00

September, 2008

© Copyright 2008 SAP AG. All rights reserved.

No part of this publication may be reproduced or transmitted in any form or for any purpose without the express permission of SAP AG. The information contained herein may be changed without prior notice.

Some software products marketed by SAP AG and its distributors contain proprietary software components of other software vendors.

Microsoft, Windows, Outlook, and PowerPoint are registered trademarks of Microsoft Corporation.

IBM, DB2, DB2 Universal Database, OS/2, Parallel Sysplex, MVS/ESA, AIX, S/390, AS/400, OS/390, OS/400, iSeries, pSeries, xSeries, zSeries, z/OS, AFP, Intelligent Miner, WebSphere, Netfinity, Tivoli, Informix, i5/OS, POWER, POWER5, OpenPower and PowerPC are trademarks or registered trademarks of IBM Corporation.

Adobe, the Adobe logo, Acrobat, PostScript, and Reader are either trademarks or registered trademarks of Adobe Systems Incorporated in the United States and/or other countries.

Oracle is a registered trademark of Oracle Corporation.

UNIX, X/Open, OSF/1, and Motif are registered trademarks of the Open Group.

Citrix, ICA, Program Neighborhood, MetaFrame, WinFrame, VideoFrame, and MultiWin are trademarks or registered trademarks of Citrix Systems, Inc.

HTML, XML, XHTML and W3C are trademarks or registered trademarks of W3C®, World Wide Web Consortium, Massachusetts Institute of Technology.

Java is a registered trademark of Sun Microsystems, Inc.

JavaScript is a registered trademark of Sun Microsystems, Inc., used under license for technology invented and implemented by Netscape.

MaxDB is a trademark of MySQL AB, Sweden.

SAP, R/3, mySAP, mySAP.com, xApps, xApp, SAP NetWeaver, and other SAP products and services mentioned herein as well as their respective logos are trademarks or registered trademarks of SAP AG in Germany and in several other countries all over the world. All other product and service names mentioned are the trademarks of their respective companies. Data contained in this document serves informational purposes only. National product specifications may vary.

These materials are subject to change without notice.

These materials are provided by SAP AG and its affiliated companies ("SAP Group") for informational purposes only, without representation or warranty of any kind, and SAP Group shall not be liable for errors or omissions with respect to the materials. The only warranties for SAP Group products and services are those that are set forth in the express warranty statements accompanying such products and services, if any. Nothing herein should be construed as constituting an additional warranty.

These materials are provided "as is" without a warranty of any kind, either express or implied, including but not limited to, the implied warranties of merchantability, fitness for a particular purpose, or non-infringement.

SAP shall not be liable for damages of any kind including without limitation direct, special, indirect, or consequential damages that may result from the use of these materials.

SAP does not warrant the accuracy or completeness of the information, text, graphics, links or other items contained within these materials. SAP has no control over the information that you may access through the use of hot links contained in these materials and does not endorse your use of third party web pages nor provide any warranty whatsoever relating to third party web pages.

SAP NetWeaver "How-to" Guides are intended to simplify the product implementation. While specific product features and procedures typically are explained in a practical business context, it is not implied that those features and procedures are the only approach in solving a specific business problem using SAP NetWeaver. Should you wish to receive additional information, clarification or support, please refer to SAP Consulting.

Any software coding and/or code lines / strings ("Code") included in this documentation are only examples and are not intended to be used in a productive system environment. The Code is only intended better explain and visualize the syntax and phrasing rules of certain coding. SAP does not warrant the correctness and completeness of the Code given herein, and SAP shall not be liable for errors or damages caused by the usage of the Code, except if such damages were caused by SAP intentionally or grossly negligent.

Disclaimer

Some components of this product are based on Java™. Any code change in these components may cause unpredictable and severe malfunctions and is therefore expressly prohibited, as is any decompilation of these components.

Any Java™ Source Code delivered with this product is only to be used by SAP's Support Services and may not be modified or altered in any way.

Table of Contents

- 1. **Business Scenario**..... 1
- 2. **Background Information**..... 1
- 3. **Prerequisites** 1
- 4. **Key Features and Configurations** 2
 - 4.1 Web service Implementation 2
 - 4.2 Connector configuration for Training and Verification system..... 2
 - 4.3 Associate connectors to roles..... 3
 - 4.4 Verify On Submit – If Training and verification fails during request submission. 4
 - 4.5 Detour Configuration: If training and verification fails..... 5
 - 4.6 Technical Definition for the Web Service to be implemented by Customers / Partners: 6

1. Business Scenario

As part of business requirement, a user may have to go through some training while requiring access to operate certain critical transactions. To cater to this requirement; CUP has the functionality for configuring Training and Verification systems. It enables the customers to write their own implementation of the verification process for assigning a role.

2. Background Information

The solution proposed in this document enables users to configure Integration of CUP and the corresponding Training and Verification systems. Customers can write a custom webservice implementation wrapper over their training system to enable the Compliant User Provisioning application to communicate and verify if the User who is requesting the role has attended that training or not.

Training verification can be configured at role level for multiple training systems. These training and verification systems validate if a user has gone through certain trainings and based on that it provisions roles to users.

3. Prerequisites

- SAP GRC Access Control 5.3 should be installed and configured.
- The required Training and Verification system should be in place.

4. Key Features and Configurations

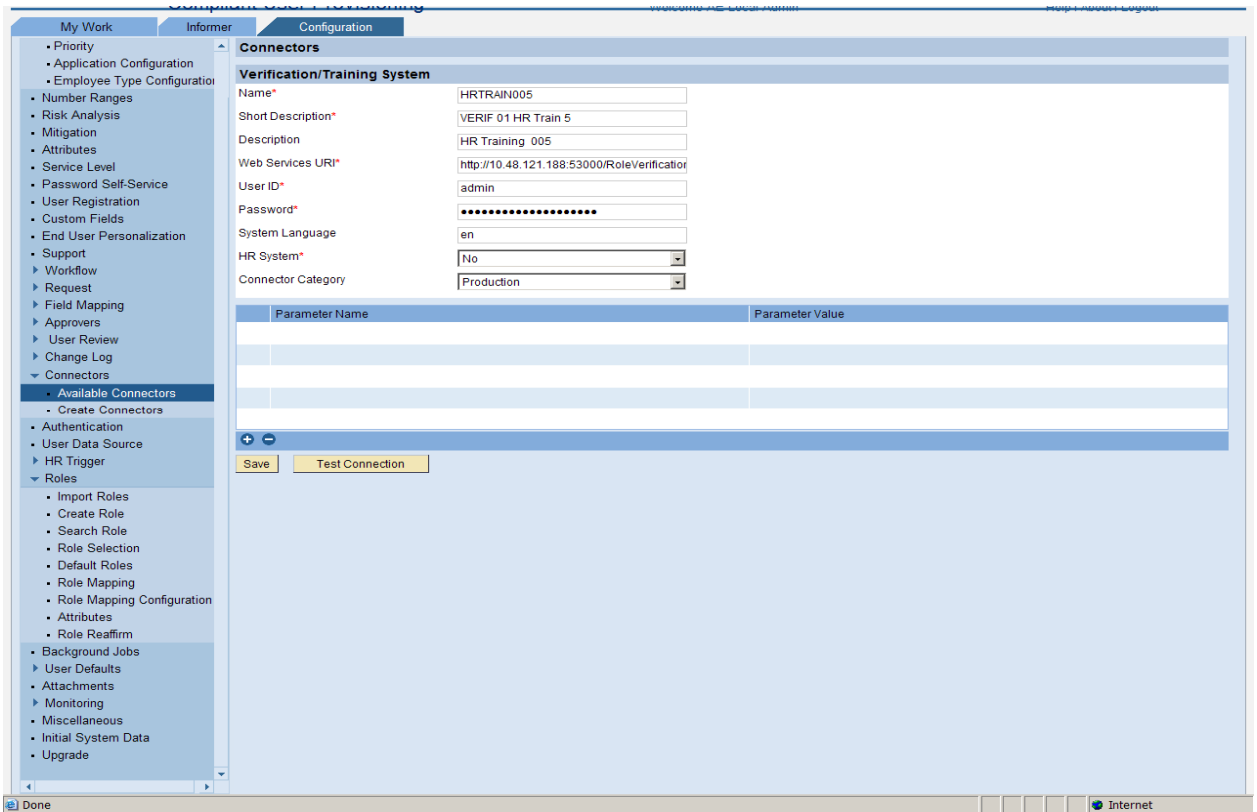
- Ability to configure and verify with more than one Verification/Training system per Role.
- Ability to verify on request submission
- Verify on Submit – configurable at Role-Verification system level.
- Ability to set up verification/training as a detour condition.
 - Verification/Training Failed : Request Level Detour condition :
If this detour condition is satisfied (verification failed), the complete request will be detoured to the new path
 - Roles with Verification/Training Failed : Request will split into 2 paths :
Roles for which the detour condition is satisfied (verification failed) will be detoured to the new path, other roles will take the main path
- Only Roles that are configured for verification will be evaluated.
- Ability to enable/disable verification system per role

4.1 Web service Implementation

- 1) Once the web service for training and verification system is in place; create a connector for Training and Verification system.
- 2) As part of web service implementation, the training and verification check will be performed during Request Submission and a detour will be configured for it.
- 3) While creation of request, roles are requested for which training and verification is required.
- 4) If web service fails then detour will be followed.

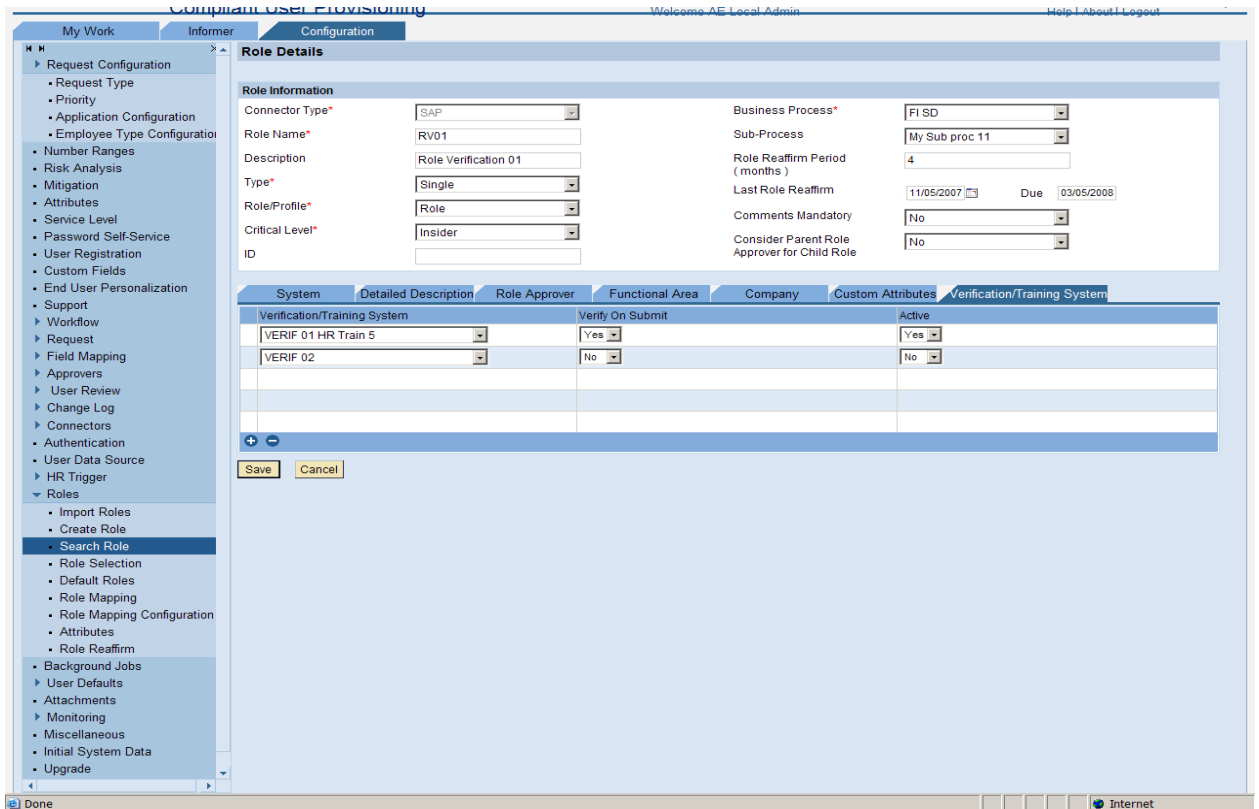
4.2 Connector configuration for Training and Verification system

- 1) From the Create Connector option of CUP, Create the connector with required parameters.



4.3 Associate connectors to roles

1. Associate Training connectors to the roles that require training verification



4.4 Verify On Submit – If Training and verification fails during request submission.

The screenshot shows the SAP 'Select Roles' dialog box. At the top, a red error message reads: 'Verification failed for User:[ARUKALA] requesting Role: [RV01]. Verification/Training System: [HRTRAIN005-VERIF 01 HR Train 5] Message: Result 1, Training not attended'. Below the message are several dropdown menus for filtering roles: 'Select the System*' (SAP 03 Connector 1), 'Select the Type of Access*' (Roles), 'Application Area' (All), 'Business Process' (-Select-), 'Sub Process' (-Select-), 'Role/Profile Name' (R*), 'Role/Profile Description' (empty), 'Functional Area' (All), and 'Company' (All). A 'Go' button is located below these filters. The 'Search Results' tab is active, displaying a table with one entry selected. The table has columns for System, Role/Profile Name, Type, Role Description, Valid From, Valid To, Role Owner, and Action.

System	Role/Profile Name	Type	Role Description	Valid From	Valid To	Role Owner	Action
<input checked="" type="checkbox"/> SAP 03 Connector 1	RV01		Role Verification 01	01/18/2008	12/31/9999	Guest	ADD

At the bottom of the dialog, there are three buttons: 'Continue', 'Cancel', and 'Existing Roles'. The status bar at the very bottom shows 'Done' and 'Internet'.

4.5 Detour Configuration: If training and verification fails.

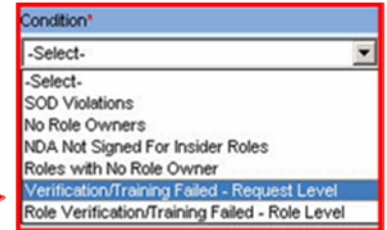
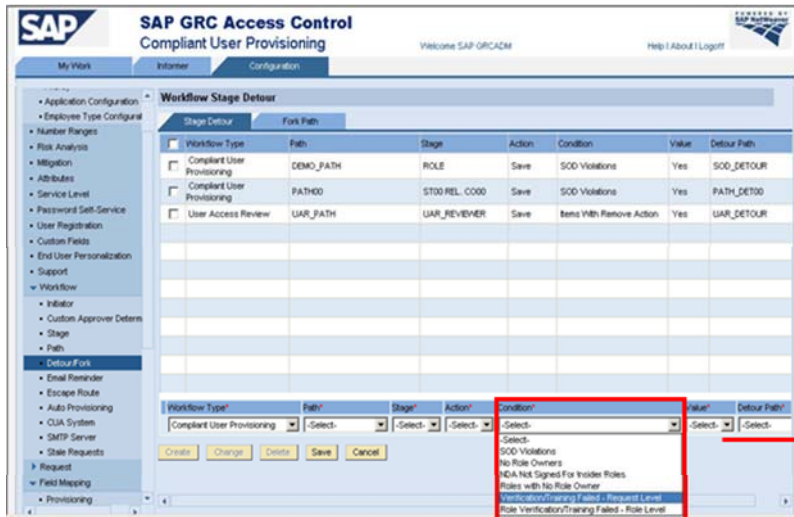
The screenshot shows the SAP Workflow Stage Detour configuration interface. The left sidebar contains a navigation tree with categories like Request Configuration, Number Ranges, Risk Analysis, Mitigation, Attributes, Service Level, Password Self-Service, User Registration, Custom Fields, End User Personalization, Support, Workflow, Initiator, Custom Approver Determination, Stage, Path, Detour/Fork, Email Reminder, Escape Route, Auto Provisioning, CUA System, SMTP Server, Stale Requests, Request, Field Mapping, Approvers, User Review, Change Log, Connectors, Authentication, User Data Source, HR Trigger, Roles, Background Jobs, User Defaults, Attachments, Monitoring, and Miscellaneous. The main area is titled 'Workflow Stage Detour' and has two tabs: 'Stage Detour' and 'Fork Path'. The 'Stage Detour' tab is active, showing a table with columns: Workflow Type, Path, Stage, Action, Condition, Value, and Detour Path. There are four rows of configuration data. Below the table is a summary row with dropdown menus for Workflow Type, Path, Stage, Action, Condition, Value, and Detour Path, followed by buttons for Create, Change, Delete, Save, and Cancel.

Workflow Type	Path	Stage	Action	Condition	Value	Detour Path
<input type="checkbox"/> Access Enforcer	PRIO_HIGH	PRIO_HIGH	Save	Verification/Training Failed - Request Level	Yes	DT_HIGH
<input type="checkbox"/> Access Enforcer	TESTP2	TEST2	Save	Verification/Training Failed - Request Level	Yes	TESTP2
<input type="checkbox"/> Access Enforcer	TESTP2	TESTSTAGE1	Save	Role Verification/Training Failed - Role Level	Yes	TESTP2
<input type="checkbox"/> Access Enforcer	TESTP2	TESTSTAGE1	Save	SOD Violations	No	TESTP2

Summary Row:
Workflow Type*: Access Enforcer | Path*: PRIO_HIGH | Stage*: SECURITY | Action*: Save | Condition*: Verification/Training Failed - Request Level | Value*: Yes | Detour Path*: DT_HIGH

Buttons: Create, Change, Delete, Save, Cancel

- **Verification/Training Failed - Request Level**
 - The entire request follows the detour
- **Role Verification/Training Failed – Role Level**
 - The request will split with only failed roles following the detour
 - The other roles continue on the main path

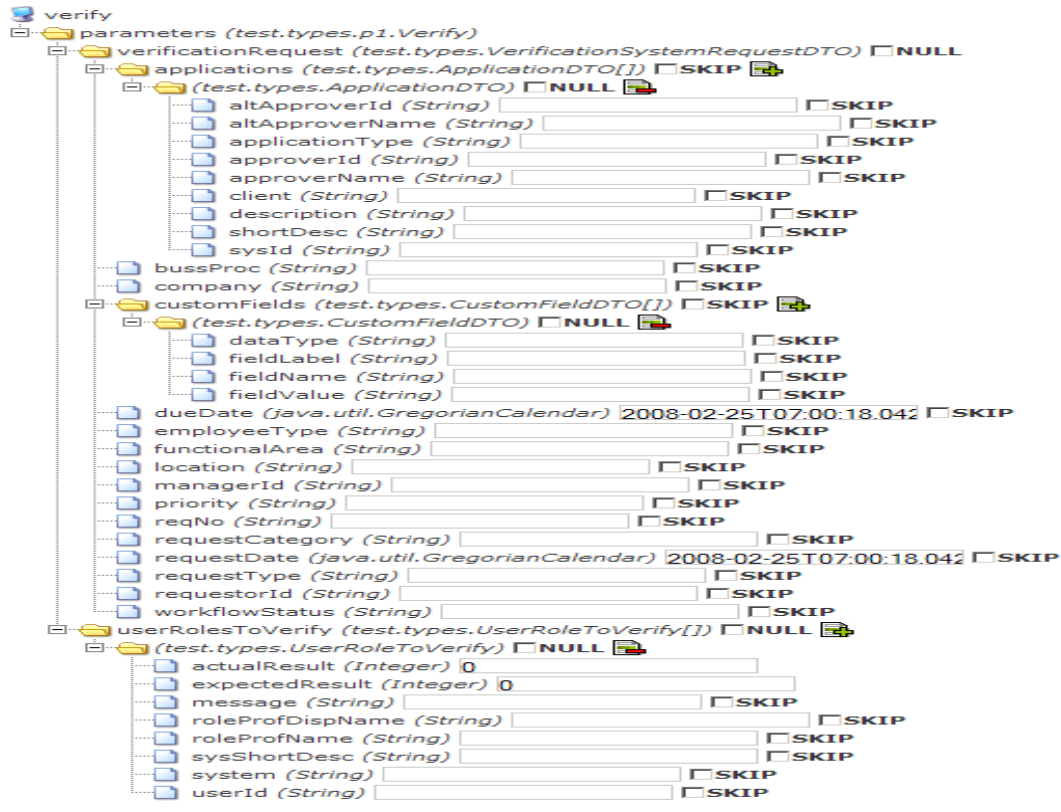


4.6 Technical Definition for the Web Service to be implemented by Customers / Partners:

INPUT:

GRC will provide the request data and roles to verify as input to the customer web service and using these details web service should verify and set the response for each role that is verified.

REQUEST



OUTPUT

The Customer/Partner web service must return the result in the following format.

Response

